



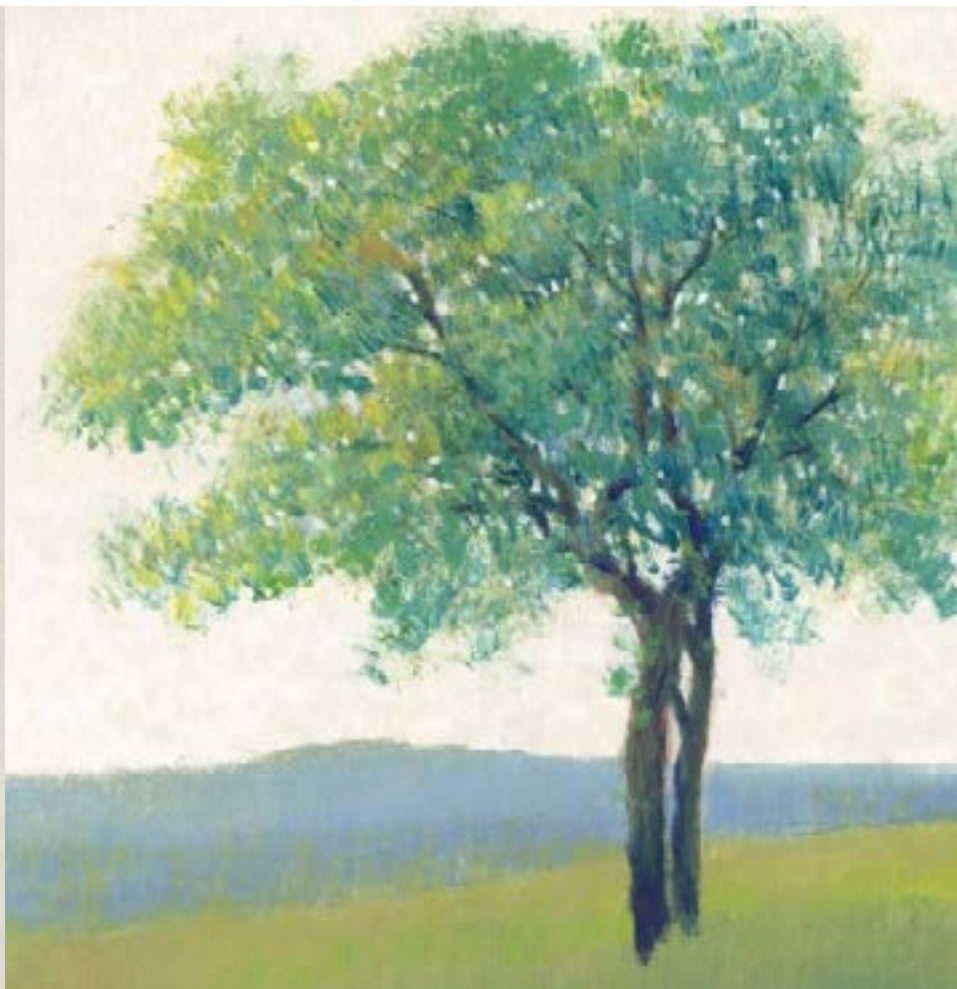




**neutral musings**

brushstrokes, mark making, and scribbled gestures in a soft and soothing neutral palette.





**cottagecore**

a nostalgic aesthetic inspired by romanticized rural and countryside lifestyles.





**black and tan**

a classy and sophisticated color duo that lends itself to a variety of subject matter and styles.

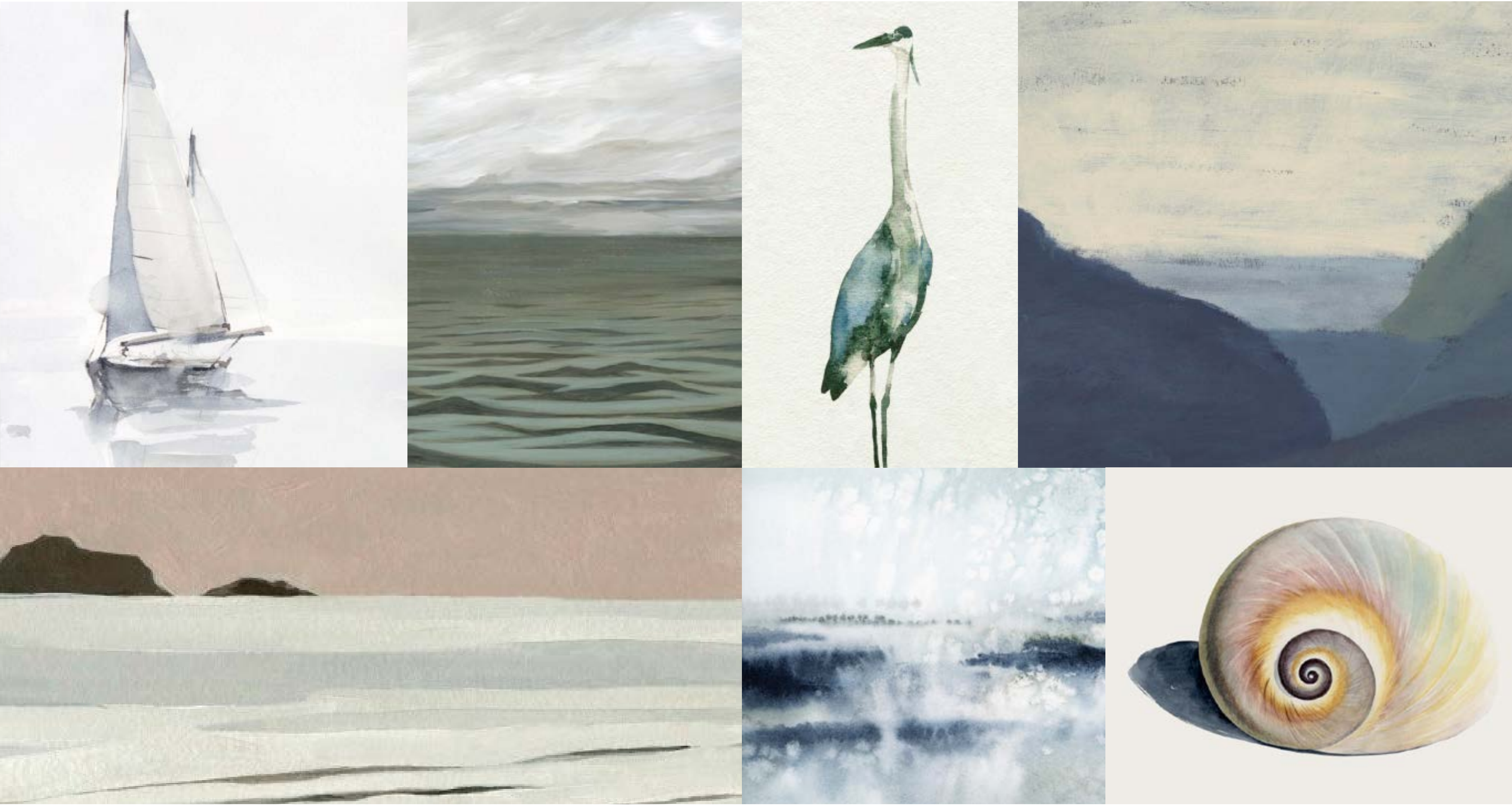




**muted olive**

soft and sweet blue-green hues that are both refreshing and revitalizing.





**moody coast**

take a swim on the dark side with these intense coastlines, stormy seas and intriguing sea life.

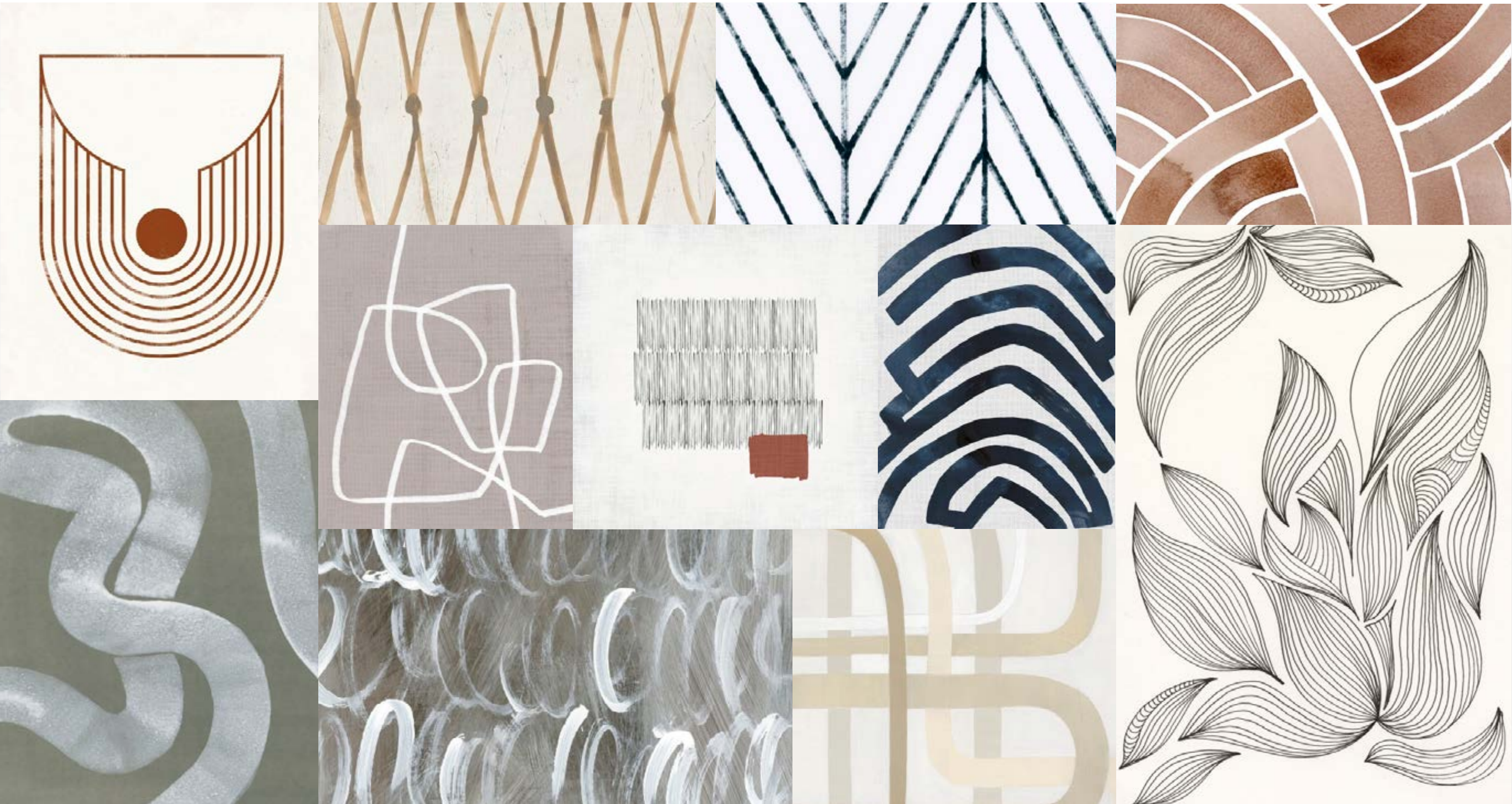




**sienna nature**

collections and gatherings of elements in nature in rich, coppery brown tones.





## line design

curvy, crisscross, straight and narrow – all kinds of lines to make interesting designs.





**bucolic**

pastoral landscapes and farm life that illustrate the pleasant aspects of the countryside.

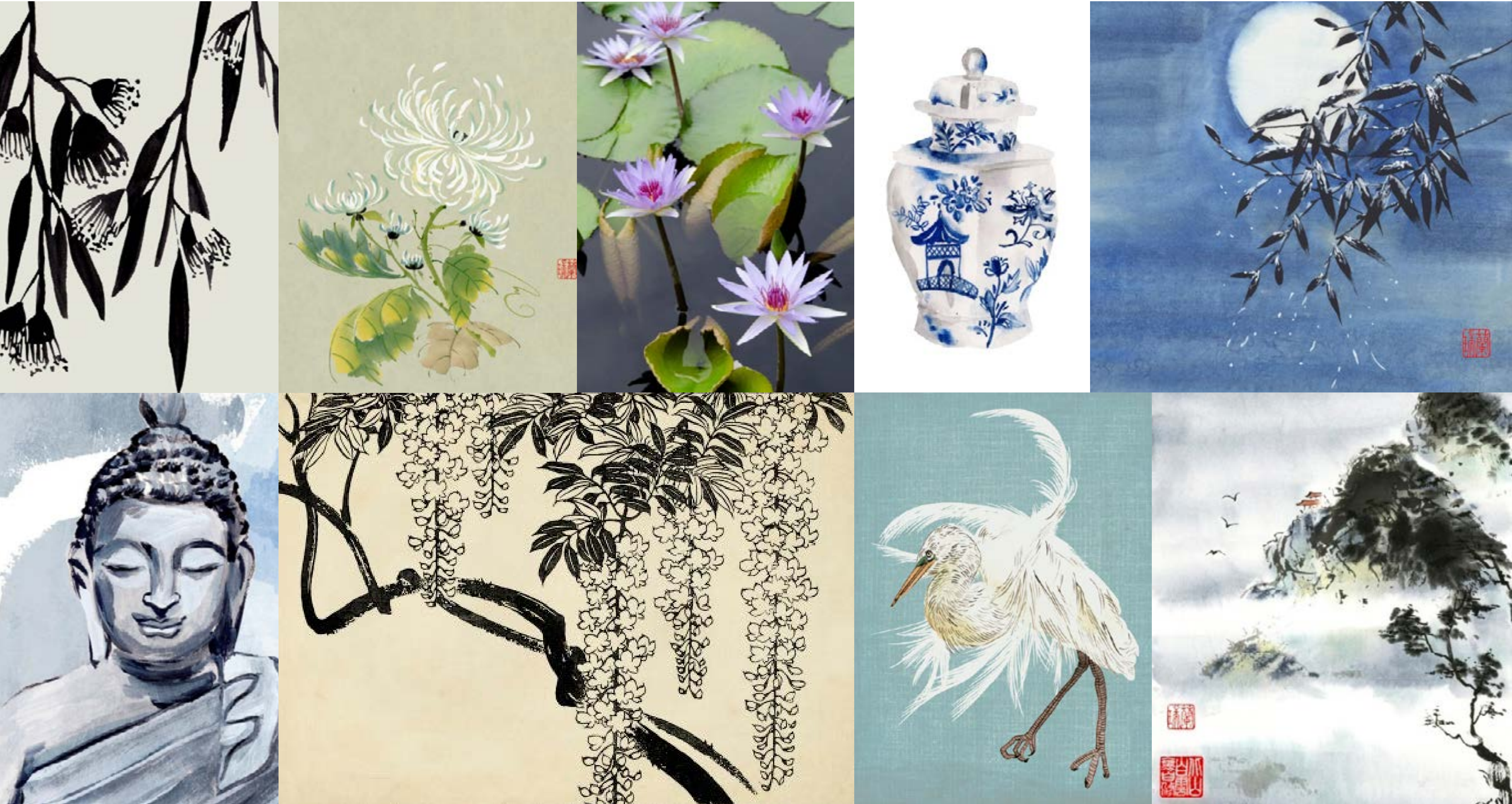




**chromatic**

playful imagery colored in bold and bright hues.





**serenity zen**

peaceful, serene and tranquil - the idea of a simple life in harmony with nature.

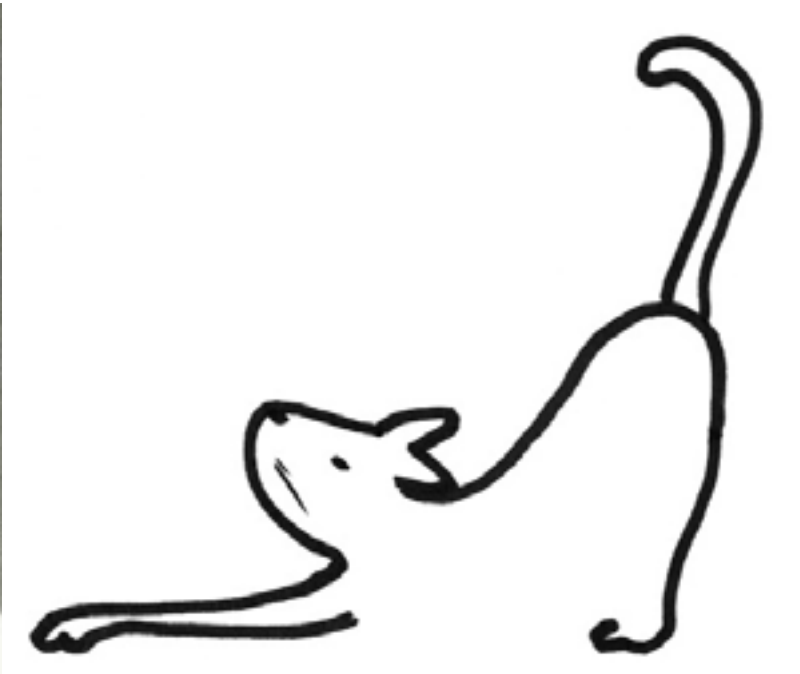




**metallic accents**

elevated imagery enhanced with gold, silver or copper embellishments.





**furry friends**

featuring pets – our cute, cuddly and loveable companions.